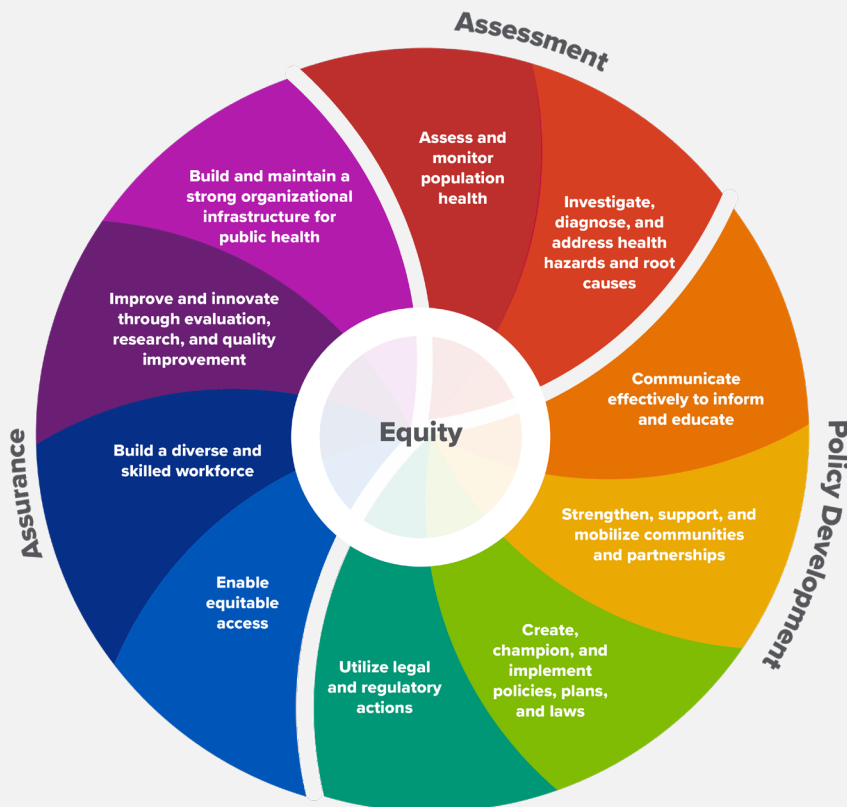


THE 10 ESSENTIAL PUBLIC HEALTH SERVICES

To protect and promote the health of all people in all communities

The 10 Essential Public Health Services provide a framework for public health to protect and promote the health of all people in all communities. To achieve equity, the Essential Public Health Services actively promote policies, systems, and overall community conditions that enable optimal health for all and seek to remove systemic and structural barriers that have resulted in health inequities. Such barriers include poverty, racism, gender discrimination, ableism, and other forms of oppression. Everyone should have a fair and just opportunity to achieve optimal health and well-being.



ESSENTIAL PUBLIC HEALTH SERVICE #1

Assess and monitor population health status, factors that influence health, and community needs and assets

ESSENTIAL PUBLIC HEALTH SERVICE #2

Investigate, diagnose, and address health problems and hazards affecting the population

ESSENTIAL PUBLIC HEALTH SERVICE #3

Communicate effectively to inform and educate people about health, factors that influence it, and how to improve it

ESSENTIAL PUBLIC HEALTH SERVICE #4

Strengthen, support, and mobilize communities and partnerships to improve health

ESSENTIAL PUBLIC HEALTH SERVICE #5

Create, champion, and implement policies, plans, and laws that impact health

ESSENTIAL PUBLIC HEALTH SERVICE #6

Utilize legal and regulatory actions designed to improve and protect the public's health

ESSENTIAL PUBLIC HEALTH SERVICE #7

Assure an effective system that enables equitable access to the individual services and care needed to be healthy

ESSENTIAL PUBLIC HEALTH SERVICE #8

Build and support a diverse and skilled public health workforce

ESSENTIAL PUBLIC HEALTH SERVICE #9

Improve and innovate public health functions through ongoing evaluation, research, and continuous quality improvement

ESSENTIAL PUBLIC HEALTH SERVICE #10

Build and maintain a strong organizational infrastructure for public health